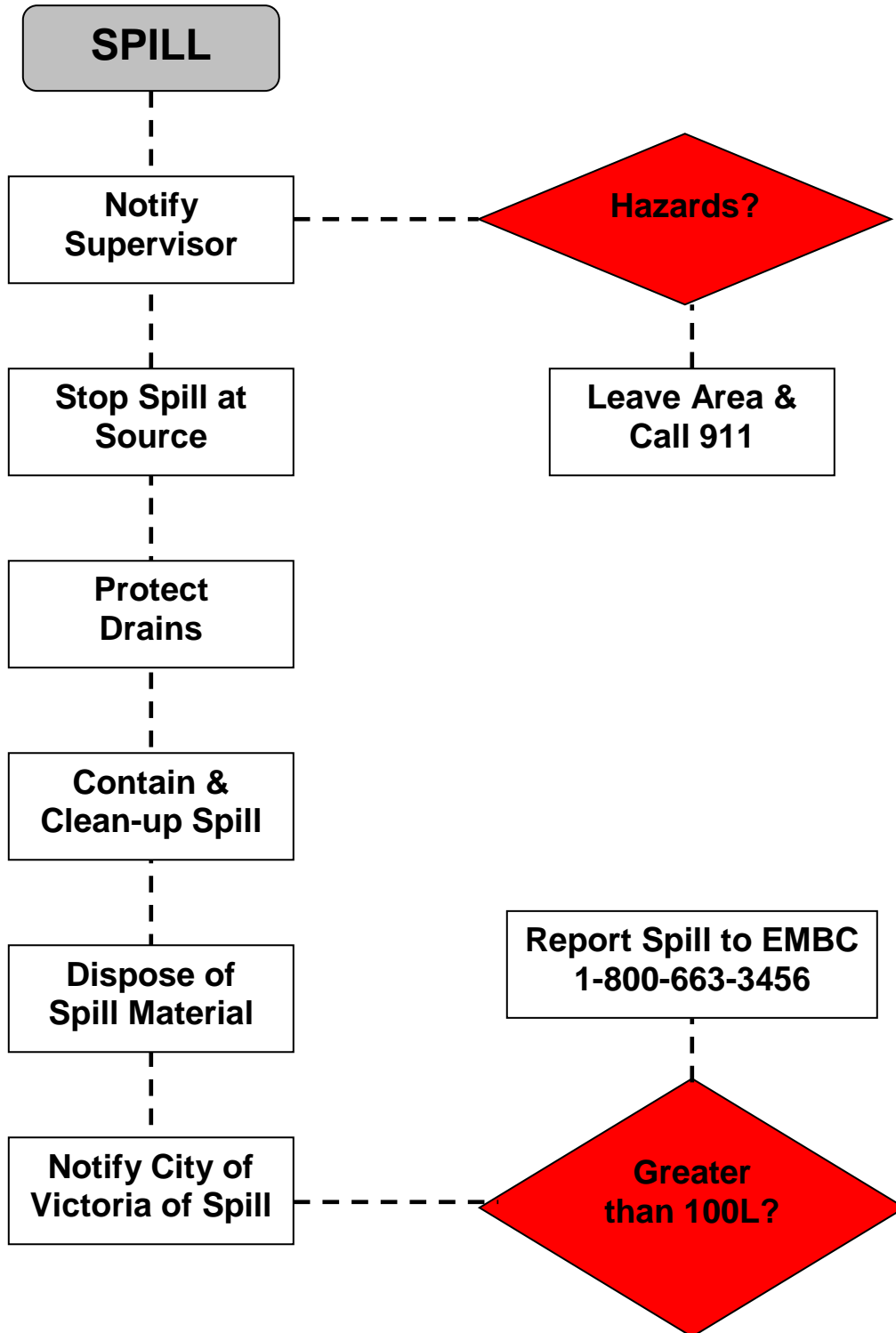




- *Spill response procedures – Page 2*
- *Spill response diagram – Pages 3 & 4*
- *Emergency contact information – Page 5*
- *Spill response equipment list – Page 6*



Spill Response Procedures

1. Contact supervisors and co-workers
 - Notify them of the spill
 - Render assistance as required
2. Check for hazards
 - Consult Material Safety Data Sheets for known hazards
 - If spill is flammable, turn off engines and electrical equipment
 - If serious hazards are present, leave the area and call 911
3. Stop source of spill
 - Upright container
 - Plug hole
 - Shut off valve
4. Stop spill from entering drains
 - Close or plug drains
 - Use drain mat to cover drains
 - Use absorbent socks to build a berm around all drains
5. Stop spill from spreading
 - Use absorbent socks to contain the spill
 - Place absorbent pads and pillows directly on the spill or spread a granular absorbent over the spill
6. Clean up spilled material and used absorbent products
 - Sweep up products
 - Do not flush area with water
7. Dispose of spilled material and used absorbent products
 - Collect material for storage in secure container or yellow disposal bags
 - Label containers based on materials being stored
 - Materials must be disposed of as hazardous waste
 - Materials from gasoline spills should be stored in a well ventilated and secure location and disposed of immediately
8. Ensure that spill area is not slippery
 - Mark any slippery areas with a “slippery when wet” sign
9. Notify City or CRD Pollution Abatement Officer of the spill
 - See pages following
 - If the spill has gone beyond your site contact the Fire Department and BC HAZMAT Management Ltd.
10. Notify the Provincial Emergency Program (EMBC) of all spills greater than 100 litres
 - 1-800-663-3456
11. Contact a Hazardous waste contractor to remove waste materials

Spill Response Diagrams – A

BOOMS

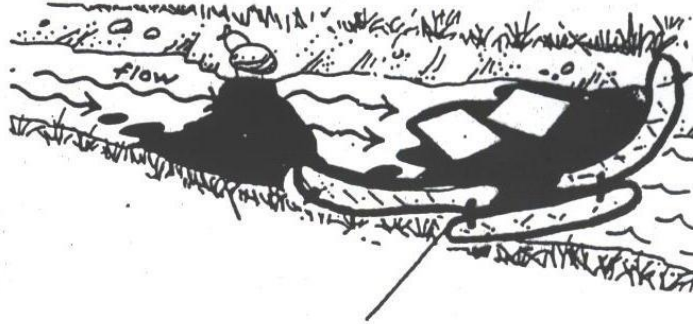
Place boom to prevent spill from spreading.



Place pads directly on spill

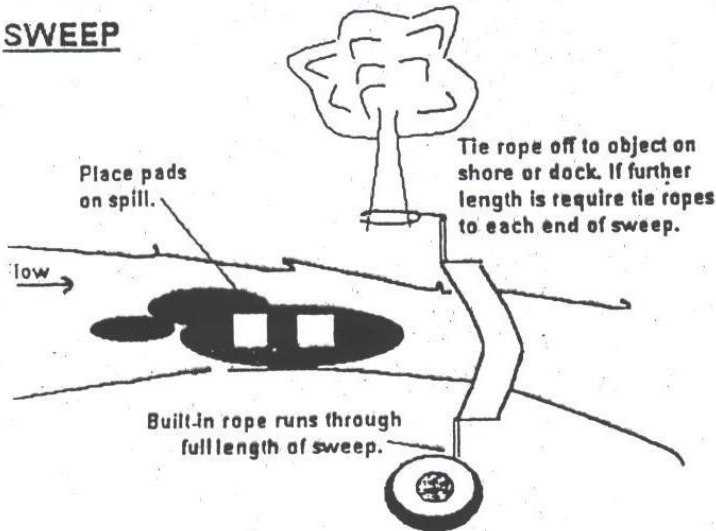
Link booms together using built-in connectors

Place boom across water to prevent spill from flowing.



Link booms together using built in connectors

SWEEP



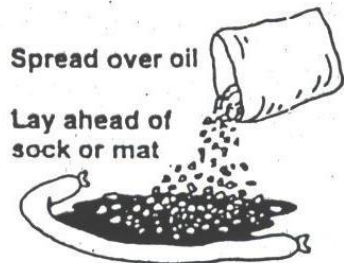
Place pads on spill.

Tie rope off to object on shore or dock. If further length is require tie ropes to each end of sweep.

Built-in rope runs through full length of sweep.

1. SAFETY FIRST - personal safety is your first concern
2. REPORT SPILLS - know your company policy
3. SPILL KITS - have your spill kit at the job site
4. OIL PRODUCTS - can float on water, soak up hydrocarbons & petrochemicals
5. UNIVERSAL PRODUCTS - use the right equipment and safety clothing - picks up most chemicals and water
6. REPLACE ABSORBENTS used from your kit

LOOSE ABSORBENTS



Spread over oil

Lay ahead of sock or mat

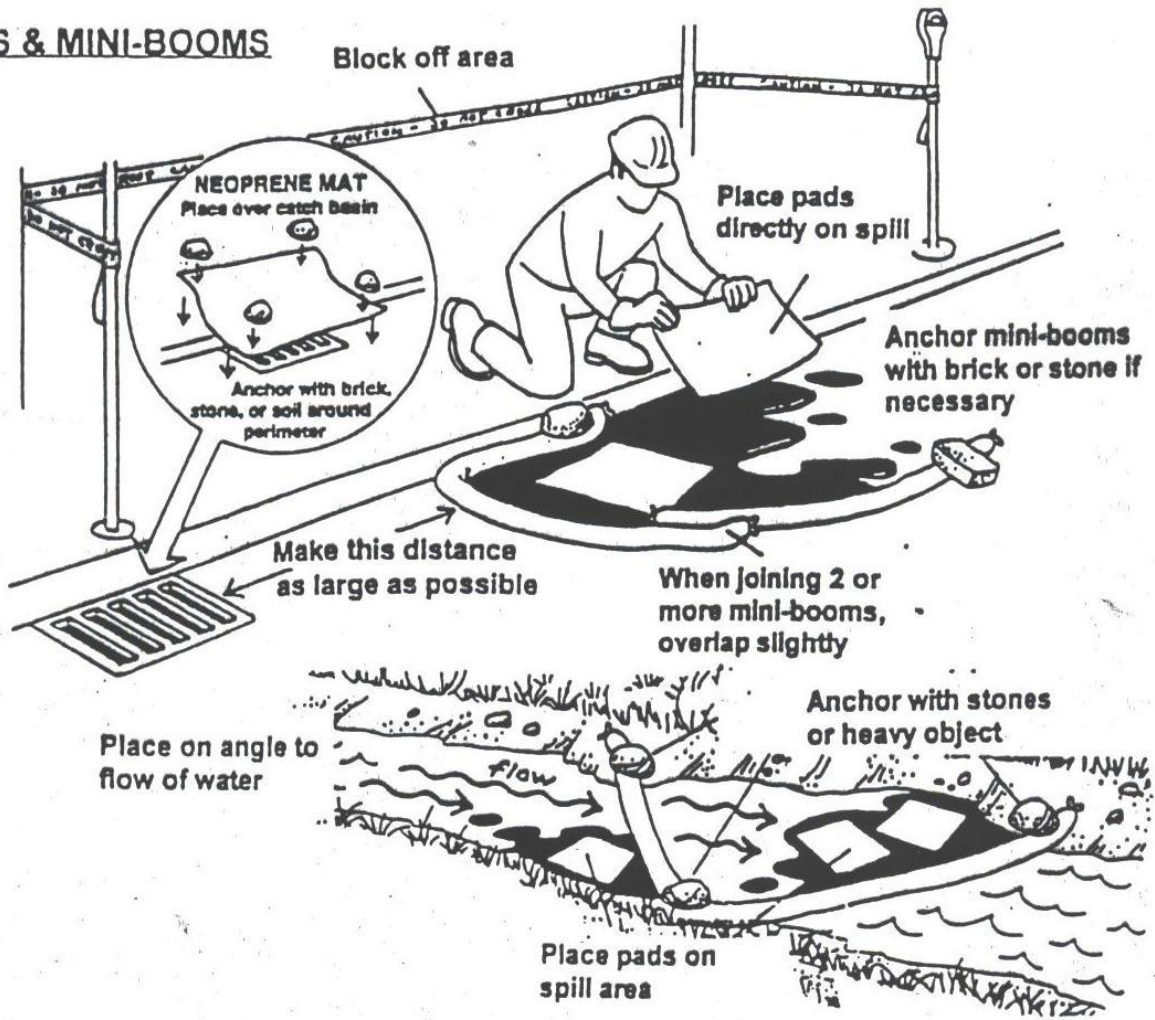


Clean-up

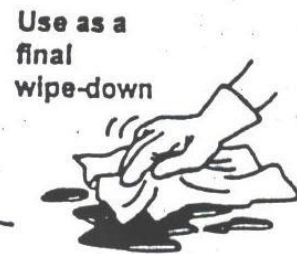
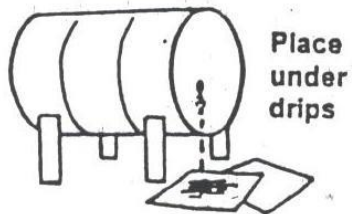
Disposal bag for off-site disposal

Spill Response Diagrams – B

PADS & MINI-BOOMS



PADS



Emergency Contact Numbers

24 Hour Emergency Spill Response

- * **BC HAZMAT 250-656-3382**

Provincial Emergency Program (EM BC)

- Phone: 1-800-663-3456

Victoria City Emergency & Environmental Services

Pollution Abatement Officer

- Work Hours Phone: 250-361-0314
- After Hours Phone: 250-385-5711

Capital Regional District

24-hour response line for spills to sanitary sewers

- Phone: 250-360-3248

All Fire Departments

- Emergency Phone: 911

All Police

- Emergency Phone: 911

Other Contact Numbers & Information

CRD Information Hotline

- Phone: 250-360-3030

West Coast Spill Supplies

24-hour absorbent availability

- Phone: 250-652-4549 or 1-888-548-3800

BCHAZMAT Management Ltd.

24 Hour Emergency Spill Response

- Phone: 250-656-3382

Listing of Spill Response Equipment

- Insert spill kit list of contents